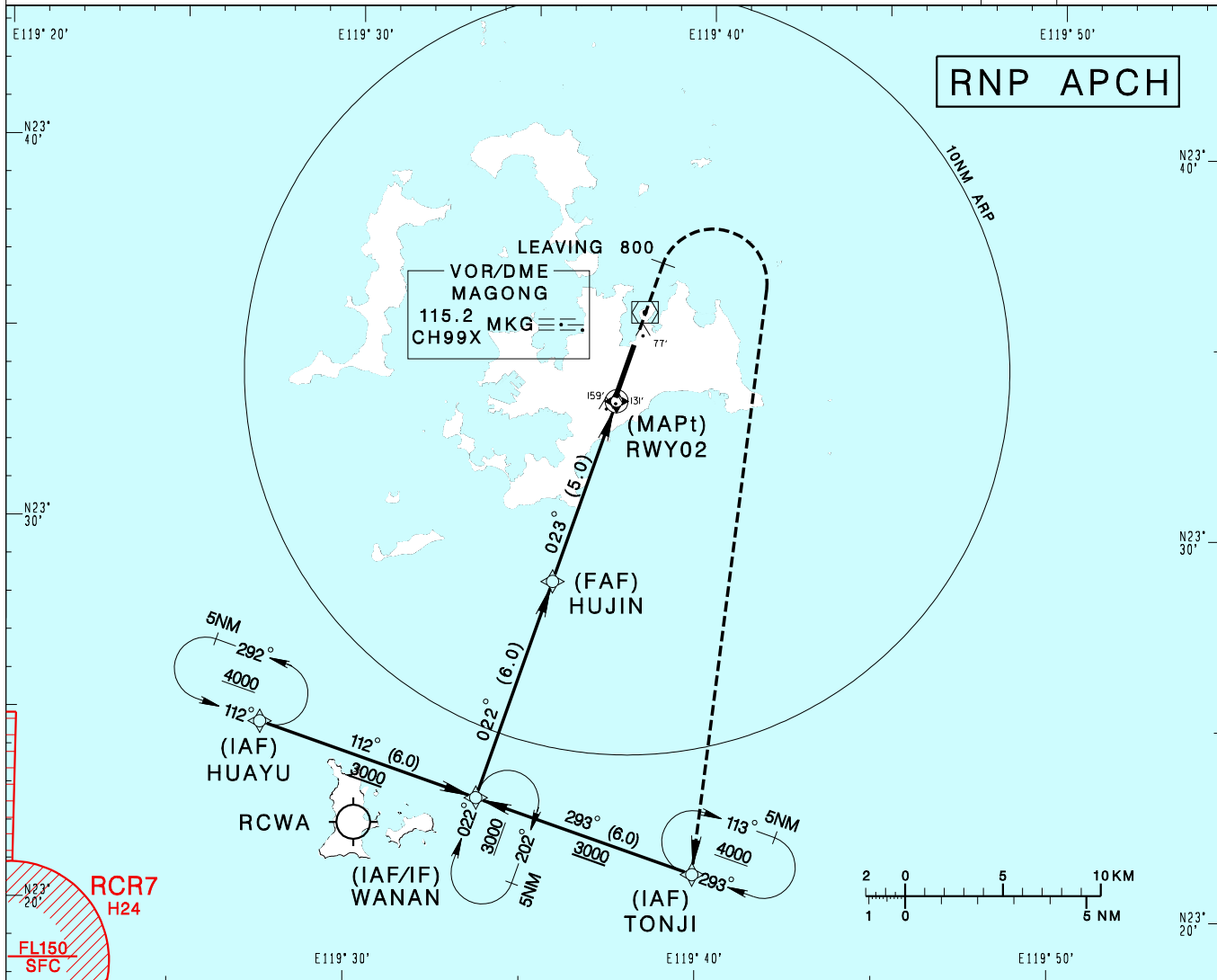


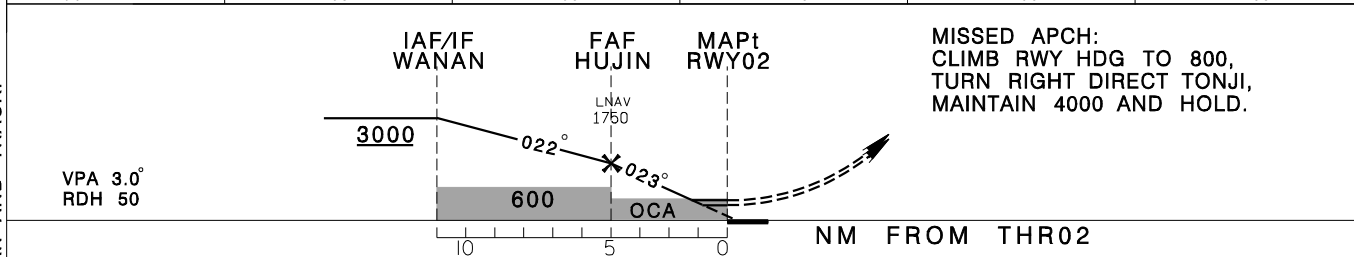
澎湖機場
PENGHU AD

RCQC
RNP RWY02

KAOSIUNG APP 128.1 234.8	MAGONG TWR 118.3 236.6	ATIS 127.05	
Apt Elev: 103' Rwy02 THR Elev: 103' Trans Level: FL130 Trans Alt: 11,000'			
BEARINGS ARE MAGNETIC; DISTANCES ARE NAUTICAL MILES; ELEVATIONS, HEIGHTS IN FEET			



DIST (NM) to THR 02	5	4	3	2	1
DIST (NM) to Next WPT	HUJIN	4	3	2	1
ADVISORY ALT	1750	1430	1110	790	480



MINIMA (OCA IN FT, VIS IN M, OCH IN FT)					
CATEGORY		A	B	C	D
LNAV/VNAV	STRAIGHT IN	410/ 800 RVR750 307	410/ 800 RVR750 307	410/ 800 RVR750 307	410/ 800 RVR750 307
	STRAIGHT IN (ALS OUT)	410/ 1400 RVR1400 307	410/ 1400 RVR1400 307	410/ 1400 RVR1400 307	410/ 1400 RVR1400 307
LNAV	STRAIGHT IN	430/ 1200 RVR1200 327	430/1600 327	430/1600 327	430/1600 327
	STRAIGHT IN (ALS OUT)	430/1600 327	430/1600 327	430/1600 327	430/1600 327

NOTE
1. CIVIL AIRCRAFT USE EAST TRAFFIC CIRCUIT.
2. BARO-VNAV NOT AUTHORIZED BELOW 0°C.
3. DME/DME NOT AUTHORIZED

CHANGES: UPDATE MAG VAR AND TRACK.